

# WHEEL EXCAVATOR **SY155W**



# SANY

# SPECIFICATIONS

ENGINE	
Model	Cummins QSB6.7
Displacement (l)	6,7
Engine power at rated engine speed (kW/rpm)	122/2300
Max. Torque (N-M @ rpm)	732/1500

SERVICE REFILL CAPACITIES (L)	
Fuel tank (l)	240
Engine coolant	23
Engine oil	22
Swing drive	3
Final drive (each side)	4x2.4
Hydraulic oil tank (l)	150

HYDRAULIC SYSTEM	
Type	Positive flow system
Number of selectable working modes	3
Main pump	
Type	Variable-capacity piston pumps
Maximum flow (l/min)	2x 160
Hydraulic motors	
Travel	2*axial piston motor with parking brake
Swing	1*axial piston motor with swing holding brake
Relief valve setting	
Implement circuits (mpa)	34,3
Travel circuit (mpa)	37,7
Swing circuit (mpa)	25
Heavy lift circuit (mpa)	34,3
Pilot circuit (mpa)	3,9
Hydraulic cylinders	
Boom cylinder diameter x stroke (mm)	105x990
Arm cylinder diameter x stroke (mm)	115x1175
Bucket cylinder diameter x stroke (mm)	100x885
Blade cylinder diameter x stroke (mm)	60x265

OPERATING WEIGHT	
Operating weight with standard bucket, fully serviced, +75 kg operator (ISO)	
Operating weight (kg)	13700
Ground Pressure (kPa)	350/500

Drive	
Travel Speed (Low/High) (km/h)	10/20/37
Maximum Travel Force (kN)	80
Gradeability	35°

Swing	
Swing Speed (rpm)	12,3

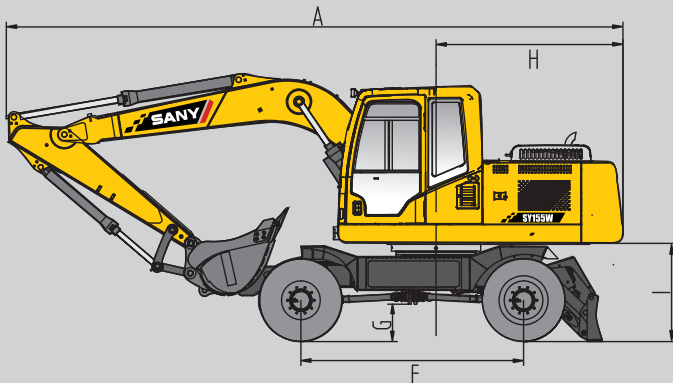
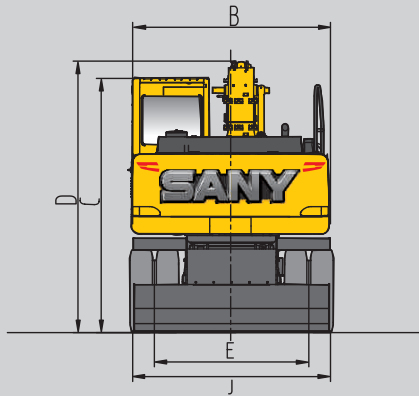
Digging Force	
Bucket Digging Force (kN)	102,3
Arm Digging Force (kN)	75,2



# LIFTING CAPACITY

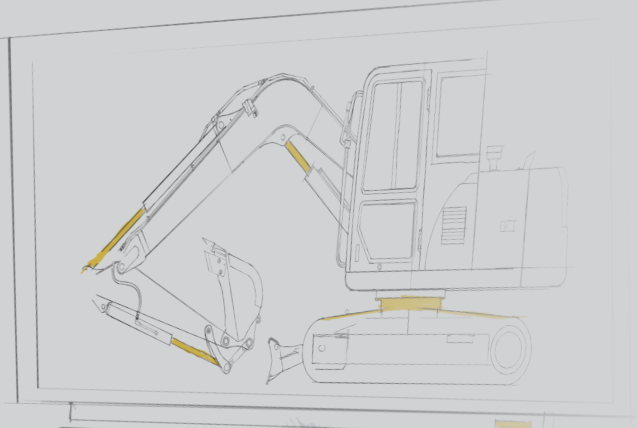
A	1.5m		3.0m		4.5m		6.0m		MAXIMUM		mm
6.0m	-	-	-	-	*3790	*3790	-	-	*3890	2650	5110
4.5m	-	-	-	-	*4050	3220	*3780	2000	*3800	1960	6070
3.0m	-	-	*7200	5420	*4810	2990	*3950	1940	*3800	1670	6550
1.5m	-	-	*9020	4830	*5570	2760	*4230	1840	*3870	1580	6660
0	-	-	*8950	4700	*5890	2630	*4300	1780	*4070	1690	6420
-1,5m	*11730	*11730	*8020	4740	*5530	2620	-	-	*3980	1880	5785
-3.0m	-	-	*6030	4900	*3920	2740	-	-	*3770	2680	4585

# DIMENSIONS

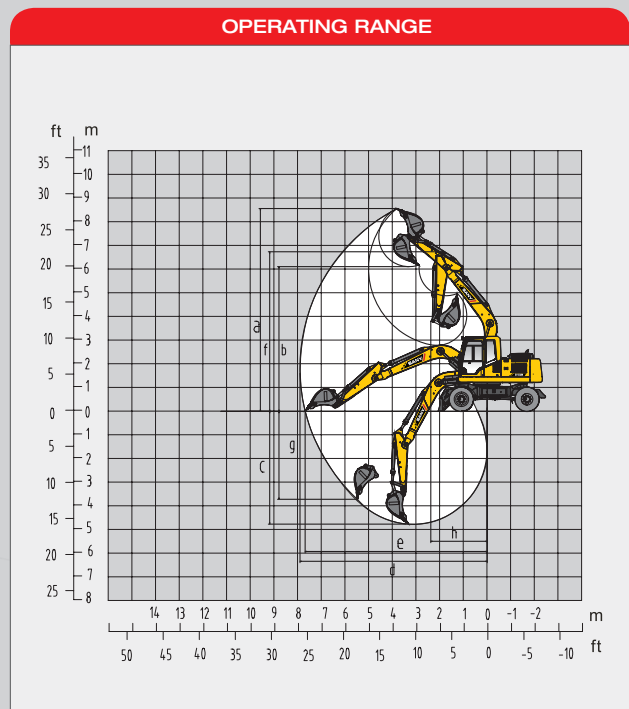


ITEM	mm
A Transport Length	7690
B Transport Width	2490
C Transport Height	3200
D Upperstructure Width	2490
E Blade Height	598
F Standard Track Shoe Width	-
G Track Gauge	-
H Minimum Ground Clearance	360
I Tail Swing Radius	2310
J Center distance of tumbler	1944
K Overall length of crawler	-
Boom Length	4600
Arm Length	2100

UNDERCARRIAGE	
Maximum Steering Angle	35°
Tool box (L)	280
Oscillating (with mudguards)	9°(6.5°)
Twin wheels	10.00-20 16PR



ITEM	mm
A Max. Digging Height	8600
B Max. Dumping Height	6200
C Max. Digging Depth	4800
D Max. Vertical Digging depth	4390
E Max. Digging Reach	7960
F Min. Swing Radius	2400
G Height at Min. Swing Radius	6800
H Max. Clearance when Blade up	472
I Max. Depth of Blade down	167



**QUALITY CHANGES THE WORLD**

**ADDR** SANY EUROPE GmbH  
Sany Allee 1, D-50181 Bedburg  
**TEL** 0049 2272 90531 100  
**FAX** 0049 2272 90531 109  
**MAIL** [info@sanyeurope.com](mailto:info@sanyeurope.com)  
**NET** [www.sanyeurope.com](http://www.sanyeurope.com)

Not all products are available in all markets. Under our policy of continuous improvement, we reserve the right to change specifications and design without prior notice. The illustrations do not necessarily show the standard version of the machine.

**SANY**